



Since 1988



**CATALOGUE**  
PRODUCT GUIDE



## **Industrial Rubber Products Production Specialized Company**

HS TECH generates the best results with a firm sense of responsibility and conviction for the value, happiness and customer satisfaction of the company and its employees

# Contents

Special rubber manufacturers for Automobiles and industries

01

## Overview

- 01. CEO Message
- 02. Overview
- 03. Business Strategy
- 04. History
- 05. Organization Chart
- 06. Certificate
- 07. Customers

02

## Manufacture

- 01. Equipment
- 02. Process

03

## Product

- 01. Rubber Bush
- 02. Bushing Arm
- 03. Suspension Mount

04

## Location

- 01. Location

## CEO Message

A trusted company growing with customers

Hello, I'm Kang Seong-gu, CEO of HS TECH.

Since its inception in 1988, Our company has grown into a professional company that produces automotive and industrial rubber products and special rubber parts based on its excellent expertise, high technology and high-tech facilities.

We strive to help our customers' productivity by producing high-quality products with detailed and professionalism in all processes from design to material to manufacturing process.

As a result, the company maintains cooperative relations with a number of automobile companies in Korea and abroad to deliver high quality products of HS TECH. In addition, it is being supplied to manufacturers in various industrial fields to be recognized for excellence and reliability in quality, and is also working on investment and human resources for high quality production.

HS TECH is a company that values technology and loyalty, growing up with customers and striving for the happiness and value of the company and its employees.

We sincerely thank our customers for supporting HS TECH.

HS TECH CEO

Kang Seong-gu

A handwritten signature in black ink, appearing to read 'Kang Seong-gu'.



## Overview

This is the company overview and information of HS TECH.

<b>Name of Company</b>	HS TECH	<b>Ceo</b>	Kang Seong-gu
<b>Business Category</b>	Manufacturing industry	<b>Business Item</b>	Rubber
<b>Date of Opening</b>	March 15, 1988	<b>Personnel</b>	45 People



## Business Strategy

Grow with customers and build industry-leading technology competitiveness

## Vision

HS TECH establishes 'Global Mission Automatic Part Company' targets based on the technology and experience it has accumulated, and all its executives and employees are making constant efforts and research and development efforts to achieve their goals.

## Mission

Growth into an automotive parts manufacturing company with global technical skills

## Management Ideology

The company will expand its profit base and generate various values through the development of enterprise-wide technologies and capabilities, and contribute to the development of the nation and society.

### Global Mission Automobile part Company

- Having the skills to meet the client's needs
- Develop innovative finished products with the best materials and technology
- Discovering challenging and creative talent

### Management purpose



Differentiate technology and strengthen core technology capabilities



Securing flawless quality



Prompt delivery



An increase in mutual sales

### Management Policy

#### Creation and Innovation

Development of HS TECH's High Completion and Special Products through Constant Technology Development and Research

#### Strengthening competitiveness

Innovative and detailed processes and improved awareness of all employees strengthen the company's value and product competitiveness to become a unique company.

#### Responsibility and sincerity

Contribute to self-development of the company by displaying maximum capacity based on close relationships and trust with executives and employees and customers.



# Overview

## History

History of Hstech's growth



HS TECH has been growing with the confidence of global automotive brands at home and abroad, and has been growing with customers by producing high-quality parts to respond to the development of automotive technology.

HS TECH will now become a leading automotive parts manufacturer based on trust, rich experience and high technology.

## 1980~2010's

### 2018

Mar. Rename company from 'Hwasung RP' to 'HS Tech'

### 2016

Jan. launch a business A/M

### 2015

Apr. 'INJECTION' Facility Extension

### 2014

Oct. ISO/TS-16949:2009 Certification Obtained

### 2013

Oct. Mold temperature F/P, Ripening room management F/P

Sep. Expansion of Vacuum Facili

### 2012

Aug. Company Corporate body conversion

Apr. Expansion of Factory sites

### 2006

Nov. Hyundai/Kia motors SQ Mark Certificate Acquisition

### 1988

Apr. Delivery of Hyundai Motor's primary suppliers

Jan. 'Hwasung Special Rubber' Establishment

## Organization Chart

Grow with customers and build industry-leading technology competitiveness







## Certificate

Certificate and license status of HS TECH



Hyundai-Kia Motors SQ Certificate  
Rubber parts



IATF 16949:2016  
Certificate of Quality Management System



Venture business certificate  
KIDO In Republic of Korea



R&D division certificate  
korea industrial technology association

## Customers

Introduce global partners leading the world with HS TECH



Hyundai Motors



Kia Motors



Genesis



Renault Samsung



Ssangyong Motors



Chevrolet



Toyota



Lexus

## EQUIPMENT (1)

Status of production facilities and equipment in HS TECH

Equipment	Spec	Year of Purchase	Retained Quantity
Vacuum press machine	200ton	2004 years	1 machine (4 sides)
Vacuum press machine	250ton	2013 years	1 machine (4 sides)
Vacuum press machine	300ton	2012 years	1 machine (3 sides)
Vacuum press machine	250ton	2013 years	2 machine (3 sides)
Vacuum press machine	200ton	2005 years	1 machine (4 sides)
2RT	200ton	2005 years	1 machine (2 sides)
2RT	250ton	2006 years	1 machine (2 sides)
2RT	150ton	2005 years	1 machine (4 sides)
2RT	200ton	2004 years	1 machine (4 sides)
Manual press(for samples)	500ton	2013 years	1 machine (4 sides)
Injection machine	2000cc	2013 years	18 machine



## EQUIPMENT (2)

Status of production facilities and equipment in HS TECH

Equipment	Spec	Year of Purchase	Retained Quantity
Injection machine	3000cc	2014 years	2 machine
Rubber cutting machine	Rotation Type	2000 years	2 machine
Rubber cutting machine	10HP	2000 years	2 machine
Press machine(Punching)	1ton	1998 years	1 machine
Spot welder machine		2012 years	1 machine



## EQUIPMENT (3)

Status of production facilities and equipment in HS TECH

Equipment	Spec	Retained Quantity	Retained Quantity
Rheometer machine	DRM-100(0~200°C)	1 machine	TOHO TTM-125
Tensile and compression tester	0~300kgf/cm <sup>2</sup>	1 machine	Daegwang ENG
Aging tester	0~300°C	1 machine	YUJIN / YJ-72
Constant Temp Chamber	0~-50°C	1 machine	
Drying machine(Oven machine)	0 ~ 400°C	1 machine	YUJIN / YJ-72
Electronic scale	20g~100kg	5 machine	CAS
Hydrometer	DRM-100(0~200°C)	1 machine	JAPAN, GF-200
Hardness meter	KR-14A	1 machine	KR-14A JAPAN0
Infrared radiation thermometer	DRM-100(0~200°C)	1 machine	SATO, SK-8700
Contactless 2D videometer	500 x 400 x 150	1 machine	Seven Ocean



# MES

Manufacturing Execution System

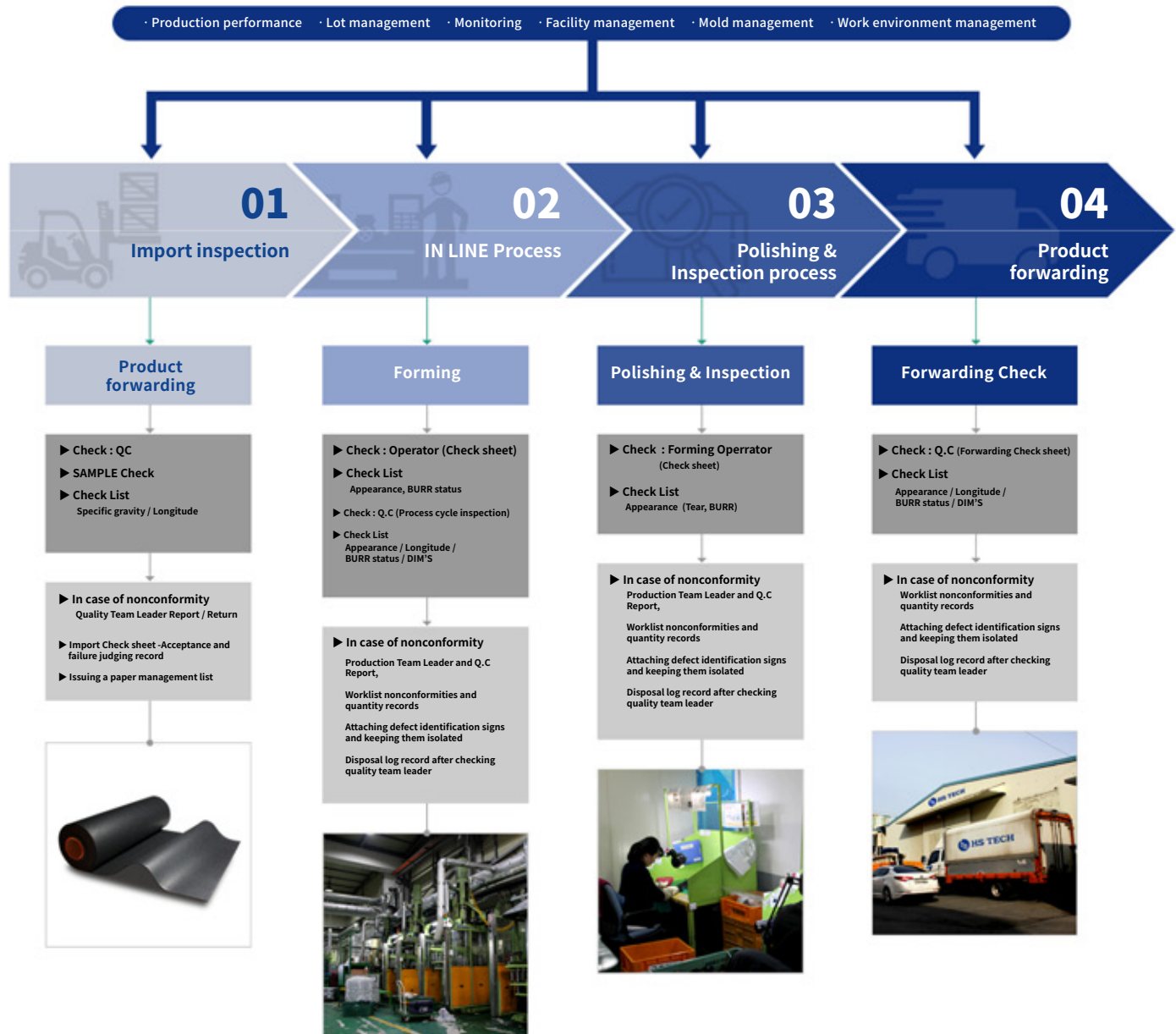
· Production performance · Lot management · Monitoring · Facility management · Mold management · Work environment management

## PROCESS

Introduce the systematic, optimized production system of HS TECH

### Production Management and Quality Management System

HS TECH introduced the 'Manufacturing Execution System' to minimize the complete quality and defect rate with the factory information system that dataizes production plans and management of production systems for all process units, including personnel, materials and equipment management.



## Rubber Product (1)

It specializes in producing dustproof rubber for industrial specifications and is manufactured with high-quality materials and manufacturing methods that absorb vibration energy and enhance buffer function, effectively absorbing and suppressing noise and vibration.

HS TECH produces high-quality products through optimal materials and rigorous processes for each part, and supplies them to various domestic and foreign automobile manufacturers



**BUSH-STABILIZER BAR FRT**  
Model No : 54812-1G000  
Cars : HYUNDAI VERNA



**BUSH-STABILIZER BAR FRT**  
Model No : 54813-2D101  
Cars : HYUNDAI AVANTE XD



**BUSH-STABILIZER BAR RR**  
Model No : 54813-2H000  
Cars : HYUNDAI AVANTE HD



**BUSH-STABILIZER BAR RR**  
Model No : 96474042  
Cars : CHEVROLET LACETTI



**BUSH-STABILIZER BAR FRT**  
Model No : 96653351  
Cars : CHEVROLET KALOS



**BUSH-STABILIZER BAR FRT**  
Model No : 54813-2E100  
Cars : HYUNDAI TUCSON



**BUSH-STABILIZER BAR FRT**  
Model No : 54812-1G100  
Cars : HYUNDAI VERNA



**BUSH-STABILIZER BAR**  
Model No : 96288900  
Cars : CHEVROLET REZZO



**BUSH-STABILIZER BAR**  
Model No : 96474041  
Cars : CHEVROLET LACETTI



**BUSH-STABILIZER BAR**  
Model No : 54813-3X001  
Cars : HYUNDAI AVANTE



**BUSH-RUBBER (S)**  
Model No : 55256-44100  
Cars : HYUNDAI PORTER



**BUSH-STABILIZER BAR RR**  
Model No : 55513-25000 / 55513-22500 / 55513-22000  
Cars : HYUNDAI VERNA



**BUSH-STABILIZER BAR FRT**  
Model No : 54813-26100  
Cars : HYUNDAI SANTAFE

## Rubber Product (2)

It specializes in producing dustproof rubber for industrial specifications and is manufactured with high-quality materials and manufacturing methods that absorb vibration energy and enhance buffer function, effectively absorbing and suppressing noise and vibration.

HS TECH produces high-quality products through optimal materials and rigorous processes for each part, and supplies them to various domestic and foreign automobile manufacturers



**BUSH-STABILIZER BAR RR**  
Model No : 55513-2D100  
Cars : HYUNDAI AVANTE XD



**BUSH-STABILIZER BAR RR**  
Model No : 55513-1H000  
Cars : HYUNDAI i30



**BUSH-STABILIZER BAR FRT**  
Model No : 54813-2S000  
Cars : HYUNDAI TUCSON



**BUSH-STABILIZER BAR RR**  
Model No : 54813-3X500  
Cars : HYUNDAI AVANTE



**BUSH-STABILIZER BAR FRT**  
Model No : 55513-2E000 / 55513-2E100  
Cars : HYUNDAI TUCSON



**BUSH-RUBBER SPRING(L)**  
Model No : 55257-44000  
Cars : HYUNDAI GRACE



**BUSH-STABILIZER BAR FRT**  
Model No : 54813-3S110  
Cars : HYUNDAI SONATA



**BUSH-STABILIZER BAR FRT**  
Model No : 54813-3E000  
Cars : KIA SORENTO



**BUSH-STABILIZER BAR RR**  
Model No : 55513-2S100 / 55513-2S000  
Cars : HYUNDAI TUCSON IX



**BUSH-STABILIZER BAR FRT**  
Model No : 96870461  
Cars : CHEVROLET AVEO



**CUSHION-ROD**  
Model No : S083-34-136A  
Cars : KIA BESTA



**BUSH-STABILIZER BAR FRT**  
Model No : 96474040 / 96839848  
Cars : CHEVROLET LACETTI



**BUSH-RUBBER SPRING(S)**  
Model No : 55256-44000  
Cars : HYUNDAI GRACE



## Rubber Product (3)

It specializes in producing dustproof rubber for industrial specifications and is manufactured with high-quality materials and manufacturing methods that absorb vibration energy and enhance buffer function, effectively absorbing and suppressing noise and vibration.

HS TECH produces high-quality products through optimal materials and rigorous processes for each part, and supplies them to various domestic and foreign automobile manufacturers



**BUSH-STABILIZER BAR RR**  
Model No : 55513-1F000  
Cars : HYUNDAI TUCSON



**BUSH-SHOCK ABS RUBBER(F)**  
Model No : 0187 34 797  
Cars : KIA BONGO



**BUSH-SHOCK ABS RUBBER(F)**  
Model No : 54311-44000  
Cars : HYUNDAI PORTER



**BUSH-STABILIZER BAR FRT**  
Model No : 96653352  
Cars : CHEVROLET KALOS



**BUSH-RUBBER(L)**  
Model No : 55257-44100  
Cars : HYUNDAI PORTER



**BUSH-STABILIZER BAR FRT**  
Model No : 54813-2D000  
Cars : HYUNDAI AVANTE XD



**BUSH-STABILIZER BAR FRT**  
Model No : 54813-2C100  
Cars : HYUNDAI AVANTE XD



**BUSH-STABILIZER BAR RR**  
Model No : 96474043 / 96941966  
Cars : CHEVROLET LACETTI



**BUSH-SHOCK ABS RUBBER(R)**  
Model No : 8173 28 775  
Cars : KIA BONGO



**BUSH-SHOCK ABS RUBBER(R)**  
Model No : 55311-45001  
Cars : HYUNDAI MIGHTY



**BUSH-STABILIZER BAR FRT**  
Model No : 55513-3E000  
Cars : KIA SORENTO



**BUSH-STABILIZER BAR FRT**  
Model No : 54813-3X000  
Cars : HYUNDAI AVANTE MD



**BUSH-STABILIZER BAR FRT**  
Model No : 54813-2E000  
Cars : HYUNDAI TUCSON

## Rubber Product (4)

It specializes in producing dustproof rubber for industrial specifications and is manufactured with high-quality materials and manufacturing methods that absorb vibration energy and enhance buffer function, effectively absorbing and suppressing noise and vibration.

HS TECH produces high-quality products through optimal materials and rigorous processes for each part, and supplies them to various domestic and foreign automobile manufacturers



**BUSH-STABILIZER BAR FRT**  
Model No : 54813-25000  
Cars : HYUNDAI VERNA



**BUSH-STABILIZER BAR FRT**  
Model No : 54813-2G001  
Cars : KIA LOTZE



**BUSH-STABILIZER BAR FRT**  
Model No : 54813-2G000  
Cars : HYUNDAI VERNA

## Bush Arm (1)

The bushing, which is mainly applied to the parts of the lower part of the car that are connected between the parts and the parts, acts as a dust proof to reduce the vibration or noise transmitted from the road surface or engine.

HS TECH produces high-quality products through optimal materials and rigorous processes for each part, and supplies them to various domestic and foreign automotive manufacturers.



**BUSH-FRT LWR ARM RR**  
Model No : 54551-2H000  
Cars : HYUNDAI AVANTE



**BUSH-FRT LWR ARM BIG**  
Model No : 54584-1M000 / 54584-0Q000  
Cars : KIA FORTE



**BUSH-FRT LWR ARM(G)**  
Model No : 54584-3X000  
Cars : HYUNDAI AVANTE



**BUSH-FRT LWR ARM(A)**  
Model No : 54551-07000 / 54551-07001  
Cars : KIA MORNING



**BUSH-FRT LWR ARM(A)**  
Model No : 54551-1C000  
Cars : HYUNDAI CLICK



**BUSH-FRT LWR ARM(A)**  
Model No : 54551-25000 / 54551-1E000 / 54551-1G000  
Cars : HYUNDAI VERNA



**BUSH-RUBBER**  
Model No : 48654-12050  
Cars : TOYOTA COROLLA



**BUSH**  
Model No : OK63B34820  
Cars : KIA BESTA



**BUSH**  
Model No : 54522-4E000  
Cars : KIA BONGO 3



**BUSH**  
Model No : OS08334840  
Cars : KIA BESTA



**BUSH**  
Model No : OK200-34406  
Cars :



**BUSH**  
Model No : OS08334830  
Cars : KIA BESTA



**BUSH-FRT LWR ARM(G)**  
Model No : 54584-2G000  
Cars : KIA LOTZE

## Bush Arm (2)

The bushing, which is mainly applied to the parts of the lower part of the car that are connected between the parts and the parts, acts as a dust proof to reduce the vibration or noise transmitted from the road surface or engine.

HS TECH produces high-quality products through optimal materials and rigorous processes for each part, and supplies them to various domestic and foreign automotive manufacturers.



**BUSH-FRT LWR ARM(G)**  
Model No : 54584-D3000  
Cars : HYUNDAI TUCSON



**BUSH-FRT LWR ARM(G)**  
Model No : 54584-2W000  
Cars : HYUNDAI SANTA FE DM



**BUSH-FRT LWR ARM(G)**  
Model No : 54584-38600 / 54584-38100  
Cars : HYUNDAI SONATA / EF SONATA



**BUSH-SUSPENSION RR UP**  
Model No : 55118-2S000 / 55253-2S100 /  
55253-3W100  
Cars : HYUNDAI TUCSON / TUCSON  
IX



**BUSH-DMP**  
Model No : P96391856  
Cars : CHEVROLET LACETTI



**BUSH-FRT LWR ARM(G)**  
Model No : 54555-25000  
Cars : HYUNDAI VERNA



**BUSH-FRT LWR ARM(G)**  
Model No : 54555-26000 / 54584-26000  
Cars : HYUNDAI SANTA FE



**BUSH-FRT LWR ARM(G)**  
Model No : 54584-4H000  
Cars : HYUNDAI STAREX



**BUSH-FRT LWR ARM(G)**  
Model No : 54584-3J000  
Cars : HYUNDAI VERACRUZ



**BUSH-FRT LWR ARM(G)**  
Model No : 54584-0X000  
Cars : HYUNDAI VERNA



**BUSH-FRT LWR ARM(G)**  
Model No : 54584-07000  
Cars : KIA MORNING



**BUSH-TRAILING ARM RR RH**  
Model No : 55275-2S800  
Cars : HYUNDAI TUCSON IX



**BUSH-RR SUSPENSION ARM**  
Model No : 55118-1D000 / 55118-2G000  
Cars : HYUNDAI AVANTE / KIA LOTZE

## Bush Arm (3)

The bushing, which is mainly applied to the parts of the lower part of the car that are connected between the parts and the parts, acts as a dust proof to reduce the vibration or noise transmitted from the road surface or engine.

HS TECH produces high-quality products through optimal materials and rigorous processes for each part, and supplies them to various domestic and foreign automotive manufacturers.



**BUSH-FRT LWR ARM(G)**  
Model No : 54584-3F600  
Cars : HYUNDAI SONATA



**BUSH-FRT LWR ARM(G)**  
Model No : 54584-3K000  
Cars : HYUNDAI NF SONATA



**BUSH-FRT LWR ARM(G)**  
Model No : 54584-4D002  
Cars : KIA CARNIVAL / GRAND CARNIVAL



**BUSH-FRT LWR ARM(A)**  
Model No : 54551-C1000  
Cars : HYUNDAI SONATA



**BUSH-FRT LWR ARM(G)**  
Model No : 54584-2S100  
Cars : HYUNDAI SONATA



**BUSH-FRT LWR ARM(G)**  
Model No : 54584-2S000  
Cars : HYUNDAI TUCSON



**BUSH-FRT LWR ARM(G)**  
Model No : 54584-C1000  
Cars : HYUNDAI SONATA



**BUSH-FRT LWR ARM(G)**  
Model No : 54584-F2000  
Cars : HYUNDAI AVANTE AD



**BUSH-FRT LWR ARM(G)**  
Model No : 54584-3S000  
Cars : HYUNDAI SONATA



**BUSH-RR SUSPENSION ARM**  
Model No : 55215-C5000  
Cars : HYUNDAI TUCSON / KIA SORENTO



**BUSH-RR SUSPENSION ARM**  
Model No : 55215-2W000 / 55215-2S000  
Cars : HYUNDAI SANTAFE 2012 / TUCSON IX



**BUSH-LWR ARM**  
Model No : 54580-3E200  
Cars : KIA SORENTO



**BUSH-FRT LWR ARM RR**  
Model No : 54551-2E000  
Cars : HYUNDAI TUCSON

## Bush Arm (4)

The bushing, which is mainly applied to the parts of the lower part of the car that are connected between the parts and the parts, acts as a dust proof to reduce the vibration or noise transmitted from the road surface or engine.

HS TECH produces high-quality products through optimal materials and rigorous processes for each part, and supplies them to various domestic and foreign automotive manufacturers.



**BUSH-UPR ARM**  
Model No : 54480-3E001  
Cars : KIA SORENTO



**BUSH-FRT LWR ARM RR**  
Model No : 54551-2E000  
Cars : HYUNDAI TUCSON



**BUSH-TRAILING ARM RR LH**  
Model No : 55274-2S001 / 55274-2S000  
Cars : HYUNDAI TUCSON IX



**BUSH-LATERAL ROD**  
Model No : 55630-4H000  
Cars : HYUNDAI STAREX



**BUSH-FRT LWR ARM(A)**  
Model No : 54551-1R000  
Cars : HYUNDAI ACCENT



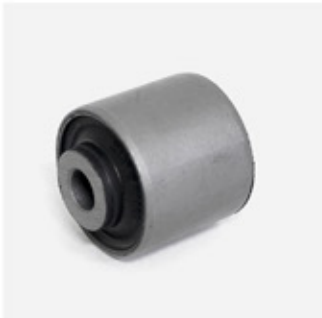
**BUSH-UPR ARM**  
Model No : 54551-2S000  
Cars : HYUNDAI TUCSON



**BUSH-FRT LWR ARM(G)**  
Model No : 54555-3A000  
Cars : HYUNDAI TRAJET



**BUSH-FRT LWR ARM(G)**  
Model No : 45665-RH003  
Cars : HYUNDAI VERACRUZ



**BUSH-UPR ARM**  
Model No : 54443-3K000 / 54443-3K001  
Cars : HYUNDAI SONATA



**BUSH-FRT LWR ARM(G)**  
Model No : 54584-1C300 / 54584-1C200 / 54584-1C000  
Cars : HYUNDAI CLICK



**BUSH-TRAILING ARM RR RH**  
Model No : 55275-3W000  
Cars : KIA SPORTAGE R



**BUSH-TRAILING ARM**  
Model No : 55543-39000  
Cars : HYUNDAI GRANDEUR XG



**BUSH-TRAILING ARM**  
Model No : 55543-35010  
Cars : KIA OPTIMA

## Bush Arm (5)

The bushing, which is mainly applied to the parts of the lower part of the car that are connected between the parts and the parts, acts as a dust proof to reduce the vibration or noise transmitted from the road surface or engine.

HS TECH produces high-quality products through optimal materials and rigorous processes for each part, and supplies them to various domestic and foreign automotive manufacturers.



**BUSH-TRAILING ARM**  
 Model No : 55543-35000 / 55543-3F100 / 55543-35010 /  
 55543-38000 / 55543-3K000  
 Cars : KIA OPTIMA / HYUNDAI SONATA / EF / NF



**SPRING BUSH-RUBBER**  
 Model No : K60A 28 330  
 Cars : KIA FRONTIER



**BUSH-TRAILING ARM(B)**  
 Model No : 52718-38000  
 Cars : HYUNDAI EF SONATA



**BUSH-RR SUSPENSION ARM**  
 Model No : 55215-2G000  
 Cars : HYUNDAI AVANTE



**BUSH-FRT LWR ARM(G)**  
 Model No : 54584-C5000  
 Cars : KIA CARNIVAL



**BUSH-FRT LWR ARM(G)**  
 Model No : 54584-1D000  
 Cars : KIA CARENS



**BUSH-FRT LWR ARM(G)**  
 Model No : 54584-A3000  
 Cars : KIA RAY



**BUSH-FRT LWR ARM(A)**  
 Model No : 54551-3R000  
 Cars : HYUNDAI SONATA



**BUSH-FRT LWR ARM(A)**  
 Model No : 54551-2B000 / 54550-2P000  
 Cars : HYUNDAI SANTAFE



**BUSH-UPR ARM RR**  
 Model No : 54522-43500 / 54522-43000  
 Cars : HYUNDAI GRACE



**BUSH-CONT ARM RR**  
 Model No : P96535088 / 96653381  
 Cars : CHEVROLET KALOS / GENTRA



**BUSH-DMP**  
 Model No : P96391856-B  
 Cars : CHEVROLET LACETTI



**BUSH-CONT ARM**  
 Model No : P96378346  
 Cars : CHEVROLET LACETTI

## Bush Arm (6)

The bushing, which is mainly applied to the parts of the lower part of the car that are connected between the parts and the parts, acts as a dust proof to reduce the vibration or noise transmitted from the road surface or engine.

HS TECH produces high-quality products through optimal materials and rigorous processes for each part, and supplies them to various domestic and foreign automotive manufacturers.



**BUSH-FRT LWR ARM(A)**  
Model No : 54551-1D000  
Cars : KIA CARENS



**BUSH-FRT LWR ARM(A)**  
Model No : 54551-2T000 / 54551-2G000  
Cars : KIA K5 / LOTZE



**BUSH-FRT LWR ARM(G)**  
Model No : 54584-2S000  
Cars : HYUNDAI YF SONATA



**BUSH-FRT LWR ARM(G)**  
Model No : 54584-B2000  
Cars : HYUNDAI STAREX / GRAND STAREX



**BUSH-FRT LWR ARM(G)**  
Model No : 54584-A6000  
Cars : KIA K3



**BUSH-CONT ARM FRT**  
Model No : P96535087  
Cars : CHEVROLET KALOS



**BUSH-FRT LWR ARM(G)**  
Model No : 54584-4D000  
Cars : KIA CARNIVAL



**BUSH-FRT LWR ARM(G)**  
Model No : 54584-2B000  
Cars : HYUNDAI SANTAFE



**BUSH-FRT LWR ARM(G)**  
Model No : 54584-2T000 / 54584-3T000  
Cars : KIA K5



**BUSH-LWR ARM(G)**  
Model No : 54584-2E000  
Cars : HYUNDAI TUCSON



**BUSH-TRAILING ARM(S)**  
Model No : 96550064  
Cars : CHEVROLET LACETTI



**BUSH-TRAILING ARM(S)**  
Model No : 55116-25000  
Cars : HYUNDAI ACCENT / VERNA



**BUSH-TRAILING ARM(S)**  
Model No : 55116-29000  
Cars : HYUNDAI AVANTE



## Bush Arm (7)

The bushing, which is mainly applied to the parts of the lower part of the car that are connected between the parts and the parts, acts as a dust proof to reduce the vibration or noise transmitted from the road surface or engine.

HS TECH produces high-quality products through optimal materials and rigorous processes for each part, and supplies them to various domestic and foreign automotive manufacturers.



**BUSH-LINK (F)**  
Model No : 96497058  
Cars : CHEVROLET LACETTI



**BUSH-AXLE**  
Model No : 52773-2G000  
Cars : HYUNDAI AVANTE / LOTZE



**BUSH-AXLE**  
Model No : 52773-3R000  
Cars : KIA K5 / LOTZE



**BUSH-FRT LWR ARM(G)**  
Model No : 54584-1W000  
Cars : KIA RIO



**BUSH-FRT LWR ARM(G)**  
Model No : 54584-1G000 / 54584-1E000  
Cars : HYUNDAI VERNA / KIA PRIDE



**BUSH-SUSPENSION RR UP**  
Model No : 55253-2W100  
Cars : HYUNDAI SANTAFE 2012



**BUSH-SUSPENSION RR**  
Model No : 55118-2S100  
Cars : HYUNDAI TUCSON IX



**BUSH-CONT ARM-BIG**  
Model No : 95217519  
Cars : CHEVROLET AVEO



**BUSH-RR SUSPENSION ARM**  
Model No : 55253-2W000  
Cars : HYUNDAI SANTAFE 2012



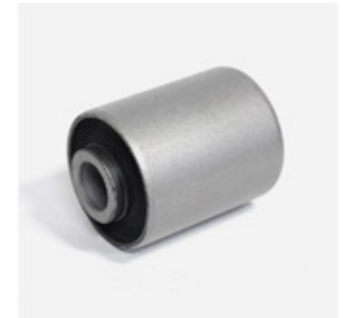
**BUSH-RR SUSPENSION ARM**  
Model No : 55230-C1100 / 55215-3R000  
Cars : HYUNDAI SONATA / YF SONATA



**BUSH-RR SUSPENSION ARM**  
Model No : 55215-3V000  
Cars : HYUNDAI HG GRANDUER



**BUSH-RR TRAILING ARM,RH**  
Model No : 55275-3S000  
Cars : HYUNDAI SONATA



**BUSH-FRT LWR ARM(S)**  
Model No : 54552-3K000 / 54552-3K600 / 545223-K000  
Cars : HYUNDAI SONATA / NF SONATE

## Bush Arm (8)

The bushing, which is mainly applied to the parts of the lower part of the car that are connected between the parts and the parts, acts as a dust proof to reduce the vibration or noise transmitted from the road surface or engine.

HS TECH produces high-quality products through optimal materials and rigorous processes for each part, and supplies them to various domestic and foreign automotive manufacturers.



**BUSH-RR SUSPENSION ARM**  
Model No : 55116-37000  
Cars : HYUNDAI SONATA



**BUSH-LWR ARM FRT**  
Model No : 54551-4H000  
Cars : HYUNDAI STAREX



**BUSH-FRT LWR ARM(A)**  
Model No : 54551-3X000  
Cars : HYUNDAI NF AVANTE



**BUSH-ROD RH**  
Model No : 54556-22102 / 54556-22100 / 54556-22000  
Cars : HYUNDAI ACCENT



**BUSH-UPR SUSPENSION ARM**  
Model No : 55118-2W500  
Cars : HYUNDAI SANTAFE



**BUSH-UPR SUSPENSION ARM**  
Model No : 55118-3R000 / 55130-C1100  
Cars : HYUNDAI YF SONATA / LF SONATA



**BUSH-RUBBER**  
Model No : 55257-2P000  
Cars : KIA K5



**BUSH-SUSPENSION ARM**  
Model No : 55215-2E500  
Cars : HYUNDAI TUCSON



**BUSH-LWR ARM PIN**  
Model No : 54551-2D000  
Cars : HYUNDAI AVANTE XD



**BUSH-RR CTR ARM**  
Model No : 55215-3K000  
Cars : HYUNDAI NF SONATA



**BUSH-LWR ARM**  
Model No : 54584-38000 / 54584-2D000  
Cars : HYUNDAI EF SONATA



**BUSHING-TRAILING ARM "B"**  
Model No : 52718-3K000  
Cars : HYUNDAI NF SONATA



**PILLOW BALL BUSH**  
Model No : 55130-4D000  
Cars : KIA CARNIVAL

## Bush Arm (9)

The bushing, which is mainly applied to the parts of the lower part of the car that are connected between the parts and the parts, acts as a dust proof to reduce the vibration or noise transmitted from the road surface or engine.

HS TECH produces high-quality products through optimal materials and rigorous processes for each part, and supplies them to various domestic and foreign automotive manufacturers.



**BUSH-SUSPENSION ARM**  
Model No : 96550055  
Cars : CHEVROLET LACETTI



**BUSH-FRT LWR ARM(A)**  
Model No : 54551-1W000  
Cars : KIA RIO



**BUSH-FRT LWR ARM(A)**  
Model No : 54551-4L000  
Cars : KIA MORNING 2012



**BUSH-FRT LWR ARM(A)**  
Model No : 54551-1J000  
Cars : HYUNDAI ACCENT



**BUSH-LWR ARM RR**  
Model No : 55216-2S000  
Cars : HYUNDAI TUCSON



**BUSH-RUBBER**  
Model No : 55256-2G000  
Cars : HYUNDAI AVANTE



**BUSH-FRT LWR ARM(G)**  
Model No : 54584-2K000  
Cars : KIA SOUL



**WHEEL HUB BUSH-RR**  
Model No : 55227-2D000  
Cars : HYUNDAI AVANTE XD



**BUSH-TRAILING ARM BIG**  
Model No : 55119-25000 / 55119-29000  
Cars : HYUNDAI VERNA



**BUSH-TRAILING ARM BIG**  
Model No : 96550057  
Cars : HYUNDAI AVANTE



**BUSH-TRAILING ARM BIG**  
Model No : 96550066  
Cars : CHEVROLET LACETTI



**BUSH-FRT LWR ARM(G)**  
Model No : 54584-1Y000 / 54584-1J000  
Cars : KIA MORNING / MORNING 2012



**BUSH-FRT LWR ARM(G)**  
Model No : 54584-1R000  
Cars : HYUNDAI ACCENT

## Bush Arm (10)

The bushing, which is mainly applied to the parts of the lower part of the car that are connected between the parts and the parts, acts as a dust proof to reduce the vibration or noise transmitted from the road surface or engine.

HS TECH produces high-quality products through optimal materials and rigorous processes for each part, and supplies them to various domestic and foreign automotive manufacturers.



**BUSH-FRT LWR ARM(G)**  
Model No : 54584-3X100  
Cars : HYUNDAI AVANTE



**BUSH-LWR ARM**  
Model No : 54580-3E002 / 54580-3E100  
Cars : KIA SORENTO



**BUSH-TRAILING ARM RR LH**  
Model No : 55274-3W000  
Cars : KIA SPORTAGE R



**BUSH-RR ASSIST ARM**  
Model No : 55253-D3000  
Cars : HYUNDAI TUCSON



**BUSH-TRAILING ARM**  
Model No : 55116-22000 / 55116-22001  
Cars : HYUNDAI ACCENT



**BUSH-LWR ARM**  
Model No : 54555-3A100  
Cars : HYUNDAI TRAJET



**BUSH-RUBBER**  
Model No : 55256-3R000  
Cars : HYUNDAI YF SONATA



**BUSH-FRT LWR ARM BIG**  
Model No : 54584-2H000  
Cars : HYUNDAI AVANTE



**BUSH-LWR ARM**  
Model No : 44461-31700  
Cars : RENAULTSAMSUNG SM3



**BUSH-ROD RH**  
Model No : 54556-02000 / 54556-02002 / 54556-02001  
Cars : HYUNDAI ATOS



**BUSH-RUBBER**  
Model No : 45654-12050  
Cars : TOYOTA COROLLA



**BUSH-LWR ARM**  
Model No : 54551-22200  
Cars : HYUNDAI ACCENT



**BUSH-ROD LH**  
Model No : 54555-22102 / 54555-22100  
Cars : HYUNDAI ACCENT

## Bush Arm (11)

The bushing, which is mainly applied to the parts of the lower part of the car that are connected between the parts and the parts, acts as a dust proof to reduce the vibration or noise transmitted from the road surface or engine.

HS TECH produces high-quality products through optimal materials and rigorous processes for each part, and supplies them to various domestic and foreign automotive manufacturers.



**BUSH-TRAILING ARM RR LH**  
Model No : 55274-2S800  
Cars : HYUNDAI TUCSON IX



**BUSH-UPR ARM ASSY-RR**  
Model No : 55270-4H100  
Cars : HYUNDAI STAREX



**BUSH-UPR ARM BIG(L) PVC**  
Model No : 54450-4B000  
Cars : HYUNDAI NEW GRACE



**BUSH-UPR ARM SMALL(S) PVC**  
Model No : 54454-4B000  
Cars : HYUNDAI NEW GRACE



**BUSH-UPR ARM BIG(L)**  
Model No : 54449-4B000  
Cars : HYUNDAI NEW GRACE



**BUSH-UPR ARM SMALL(S)**  
Model No : 54453-4B000  
Cars : HYUNDAI NEW GRACE



**BUSH-LMR ARM RR**  
Model No : 54522-4B000  
Cars : HYUNDAI STAREX



**SPRING BUSH-RUBBER**  
Model No : 55118-4A501  
Cars : HYUNDAI STAREX



**BUSH-FRT LWR ARM(A)**  
Model No : 54551-2K000 / 54551-2X000  
Cars : KIA SOUL



**BUSH-SUSPENSION ARM**  
Model No : 55219-25000 / 52773-25100 / 52773-25000  
Cars : HYUNDAI VERNA



**BUSH-RR ASSIST ARM**  
Model No : 55254-3K000  
Cars : HYUNDAI NF SONATA



**BUSH-TRAILING ARM**  
Model No : 55160-07000  
Cars : KIA MORNING



**BUSH-TRAILING ARM**  
Model No : 55160-1E000  
Cars : HYUNDAI VERNA

## Bush Arm (12)

The bushing, which is mainly applied to the parts of the lower part of the car that are connected between the parts and the parts, acts as a dust proof to reduce the vibration or noise transmitted from the road surface or engine.

HS TECH produces high-quality products through optimal materials and rigorous processes for each part, and supplies them to various domestic and foreign automotive manufacturers.



**BUSH-LEAF SPRING**  
Model No : 3874 28 330  
Cars : KIA BONGO



**BUSHING-UPPER "A" RR**  
Model No : 55342-2J000  
Cars : KIA MOHAVE



**BUSHING-UPPER "A" RR**  
Model No : 55342-2P000  
Cars : HYUNDAI SANTAFE



**BUSHING-UPPER "A" RR**  
Model No : 55342-3K000  
Cars : HYUNDAI NF SONATA



**BUSH-FRT LWR ARM(A)**  
Model No : 54551-3L000  
Cars : HYUNDAI GRANDEUR



**BUSH-FRT LWR ARM(A)**  
Model No : 54551-3K000  
Cars : HYUNDAI NF SONATA / SONATA



**BUSH-LMR ARM RR**  
Model No : 54522-4B010  
Cars : HYUNDAI PORTER



**BUSH-RR TRAILING ARM,LH**  
Model No : 55274-3S000  
Cars : HYUNDAI SONATA



**BUSH-ARM TRAILING**  
Model No : 55543-2H000  
Cars : HYUNDAI AVANTE HD



**BUSH-LATERAL ROD**  
Model No : 55620-4H000  
Cars : HYUNDAI STAREX



**BUSH-CONT ARM SMALL**  
Model No : 95228670  
Cars : CHEVROLET AVEO



**BUSH-SUSP RR**  
Model No : 55227-2E500  
Cars : HYUNDAI TUCSON



**BUSH-RUBBER**  
Model No : 90389-12001  
Cars : TOYOTA COROLLA

## Bush Arm (13)

The bushing, which is mainly applied to the parts of the lower part of the car that are connected between the parts and the parts, acts as a dust proof to reduce the vibration or noise transmitted from the road surface or engine.

HS TECH produces high-quality products through optimal materials and rigorous processes for each part, and supplies them to various domestic and foreign automotive manufacturers.



**BUSH-RUBBER**  
Model No : 48655-12170  
Cars : TOYOTA COROLLA



**BUSH-ARM UPR RR**  
Model No : 55225-4H000 / 55225-4H100  
Cars : HYUNDAI STAREX



**BUSH-FRT LWR ARM(A)**  
Model No : 54551-3A000 / 54551-3A100  
Cars : HYUNDAI TRAJET



**BUSH-FRT LWR ARM(A)**  
Model No : 54551-26000  
Cars : HYUNDAI SANTAFE



**BUSH-RUBBER**  
Model No : 96535069  
Cars : CHEVROLET KALOS



**BUSH-UPR ARM**  
Model No : 54480-3E002  
Cars : KIA SORENTO



**BUSH-RUBBER**  
Model No : 48655-12120  
Cars : TOYOTA COROLLA



**BUSH-LWR ARM FRT**  
Model No : 54551-C5000  
Cars : KIA CARNIVAL



**BUSH-LWR ARM FRT**  
Model No : 54551-A4000  
Cars : HYUNDAI SANTAFE



**BUSH-LWR ARM FRT**  
Model No : 54551-A4000 / 54551-D3000  
Cars : HYUNDAI TUCSON IX / TUCSON



**BUSH-TRAILING ARM RR RH**  
Model No : 55275-2S001 / 55275-2S000  
Cars : HYUNDAI TUCSON IX



**BUSH-LWR ARM**  
Model No : 54584-17000  
Cars : HYUNDAI AVANTE XD



**BUSH-LWR ARM**  
Model No : 54584-2F000 / 54584-2F100  
Cars : KIA CERATO

## Bush Arm (14)

The bushing, which is mainly applied to the parts of the lower part of the car that are connected between the parts and the parts, acts as a dust proof to reduce the vibration or noise transmitted from the road surface or engine.

HS TECH produces high-quality products through optimal materials and rigorous processes for each part, and supplies them to various domestic and foreign automotive manufacturers.



**BUSH-LWR ARM RR**  
Model No : 54551-02000 / 54551-22200 / 54551-02001  
Cars : HYUNDAI ATOS



**BUSH-LWR ARM RR**  
Model No : 54551-22000  
Cars : HYUNDAI ACCENT



**BUSH-LWR ARM**  
Model No : 44430-31100  
Cars : RENAULT SAMSUNG SM 3



**BUSH-ROD LH**  
Model No : 54555-02000 / 54555-02002 / 54555-02001  
Cars : HYUNDAI ATOS



**BUSH-CENTER FRT**  
Model No : 21915-1G200  
Cars : HYUNDAI VERNA



**BUSH-TRAILING ARM**  
Model No : 55116-2E000 / 55116-2E001  
Cars : HYUNDAI TUCSON



**BUSH-RUBBER ASSIST ARM**  
Model No : 55258-2P000  
Cars : KIA SORENTO



**BUSH-RUBBER ASSIST ARM**  
Model No : 55258-2B000 / 55118-2B000  
Cars : HYUNDAI SANTAFE



**BUSH-LWR ARM**  
Model No : 54551-4D001 / 54551-4D000  
Cars : KIA CARNIVAL / GRAND CARNIVAL



**BUSH-RR SUSPENSION ARM**  
Model No : 55215-22000  
Cars : HYUNDAI ACCENT



**BUSH-RUBBER**  
Model No : 48654-12010  
Cars : TOYOTA COROLLA



**BUSH-ARM SUSPENSION RR**  
Model No : 55216-4H000  
Cars : HYUNDAI STAREX



**BUSH-RUBBER**  
Model No : 44431-51000  
Cars : RENAULT SAMSUNG SM 5



## Bush Arm (15)

The bushing, which is mainly applied to the parts of the lower part of the car that are connected between the parts and the parts, acts as a dust proof to reduce the vibration or noise transmitted from the road surface or engine.

HS TECH produces high-quality products through optimal materials and rigorous processes for each part, and supplies them to various domestic and foreign automotive manufacturers.



**BUSH-TRAILING ARM**  
Model No : 55118-2B100  
Cars : HYUNDAI SANTAFE



**BUSH-RUBBER**  
Model No : 44430-51000  
Cars : RENAULT SAMSUNG SM 5



**BUSH-RUBBER**  
Model No : 48655-12050  
Cars : TOYOTA COROLLA



**BUSH-SUSPENSION ARM**  
Model No : 55219-25100 / 55219-25000  
Cars : HYUNDAI VERNA



**BUSH-LWR ARM RR**  
Model No : 54551-28000  
Cars : HYUNDAI ELANTRA



**BUSH-LWR ARM RR**  
Model No : 54551-29000  
Cars : HYUNDAI AVANTE

## Suspension Mount

The vehicle's lower body suspension and contact surfaces connected to the body and other parts are mainly dust proof rubber and steel materials as shock absorbing and mitigating parts.

HS TECH produces high-quality products through optimal materials and rigorous processes for each part, and supplies them to various domestic and foreign automobile manufacturers



**STRUT MOUNT A-FRT**  
Model No : 96549921  
Cars : CHEVROLET LACETTI



**STRUT MOUNT A-FRT**  
Model No : 95015324  
Cars : CHEVROLET KALOS



**BUSH-FRT SUSPENSION**  
Model No : 96535066  
Cars : CHEVROLET KALOS

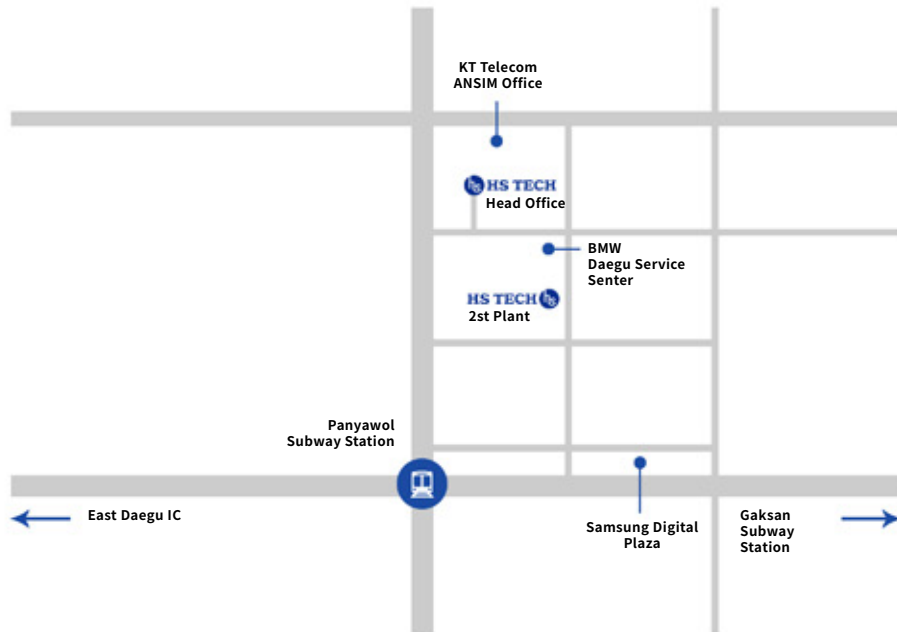




# Location

## Location

Way to HS TECH a global auto parts manufacturer



Head office : 54, Ansim-ro 53-gil, Dong-gu, Daegu, Republic of Korea

2st plant : 29, Ansim-ro 55-gil, Dong-gu, Daegu, Republic of Korea

Tel : +82-053-965-2070

Fax : +82-053-965-2072

Email : hstech05@naver.com



**Thank you**

